

VALVES - SOLENOID MEDIUM PRESSURE

MODEL: 1271 - SVM

Revision: 0

BULLETIN
1271

DESCRIPTION

The SVM-25 series are electrically operated solenoid type on-off gas valves for main line or pilot line service. Suitable for all types of gas-fired heating equipment.

Normally closed – close on current failure. Replaceable coil for simplicity of field service.

SPECIFICATIONS

Service Natural, manufactured, mixed, and LP gases.

Body Material Aluminum

Seals & Discs Buna – N

Electrical voltage 120v - 60 Hz.

Electrical wiring 2 – wire control circuit. Replaceable coil.
Solenoid jacket rotates 360°. 18" wire leads.

Electrical Coil Class F coil suitable for temperature to 125° F.

Maximum Operating
Pressure Differential 5 psi



3SVM TO 6SVM



8SVM TO 16SVM

FEATURES

- Normally closed on current failure.
- Soft seat - tight shutoff.
- Rotatable solenoid - replaceable coil.
- UL and CSA Listed.
- CGA and AGA design certified.
- FM Approved for safety shutoff through 3/4" size.
- All types of gases.

APPROVALS



CAUTION: Operation of combustion equipment can be hazardous resulting in bodily injury or equipment damage. Each burner should be supervised by a combustion safeguard and only qualified personnel should install, make system adjustments and perform any required service.



pyronics inc.

COMBUSTION FOR INDUSTRY
17700 MILES ROAD
CLEVELAND, OH 44128
www.pyronics.com

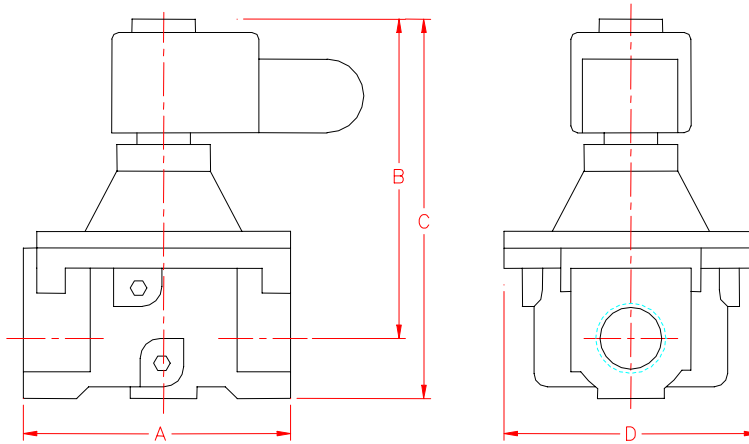
Tel: 216-662-8800
Fax: 216-663-8954
marketing@pyronics.com

NOTICE: PYRONICS practices a policy of continuous improvement in the design of its products. It reserves the right to change the specifications at any time without prior notice.

VALVES - SOLENOID MEDIUM PRESSURE

BULLETIN 1271
PAGE NO. 2

DIMENSIONS



Model Number	Pipe Size NPT	A	B	C	D	Weight	
						Lbs.	Kgs.
3SVM	3/8	2-3/4	3-15/32	4-1/32	2-23/64	1.7	0.77
4SVM	1/2	2-3/4	3-15/32	4-1/32	2-23/64	1.7	0.77
6SVM	3/4	3-5/16	3-21/32	4-15/32	2-11/32	1.8	0.82
8SVM	1	5	5-15/32	6-13/16	5-3/8	3.5	1.59
10SVM	1-1/4	5	5-17/32	6-13/16	5-3/8	3.5	1.59
12SVM	1-1/2	5	5-17/32	6-13/16	5-3/8	3.5	1.59
16SVM	2	6-3/32	5-29/32	7-13/32	6-5/16	5.5	2.49

NOTE: All dimensions are in inches.

CAPACITY TABLE

Model Number	Pipe Size NPT (inches)	Orifice Size (inches)	Cv Flow Factor	Gas Capacity * Btu/Hr.	Operating ** Pressure Differential (psi)		Fluid & Ambient Temperature (F)		Watt Rating / Class of Coil Insulation	Power Consumption	
					Min.	Max.	Min.	Max.		VA Holding	VA Inrush
					3SVM	3/8	3/4	3.4		183,000	0
4SVM	1/2	3/4	4.4	238,500	0	5	- 40	125	17.1/F	40	93
6SVM	3/4	3/4	5.1	247,500	0	5	- 40	125	17.1/F	40	93
8SVM	1	1-5/8	21.0	1,119,000	0	5	- 40	125	20/F ***	43	240
10SVM	1-1/4	1-5/8	32.0	1,730,000	0	5	- 40	125	20/F ***	43	240
12SVM	1-1/2	1-5/8	35.0	1,900,000	0	5	- 40	125	20/F ***	43	240
16SVM	2	2-3/32	60.0	2,800,000	0	5	- 40	125	20/F ***	43	240

* 1" W.C. Drop @ 2" W.C. Inlet Pressure, 1,000 Btu/Cu. Ft. or more, 0.64 Sp. Gr. Gas

** Fuel Gas Service Only

*** Must be mounted with solenoid vertical and upright.

ORDERING INFORMATION

1. Specify Model Number and Quantity
2. Shipping Instructions